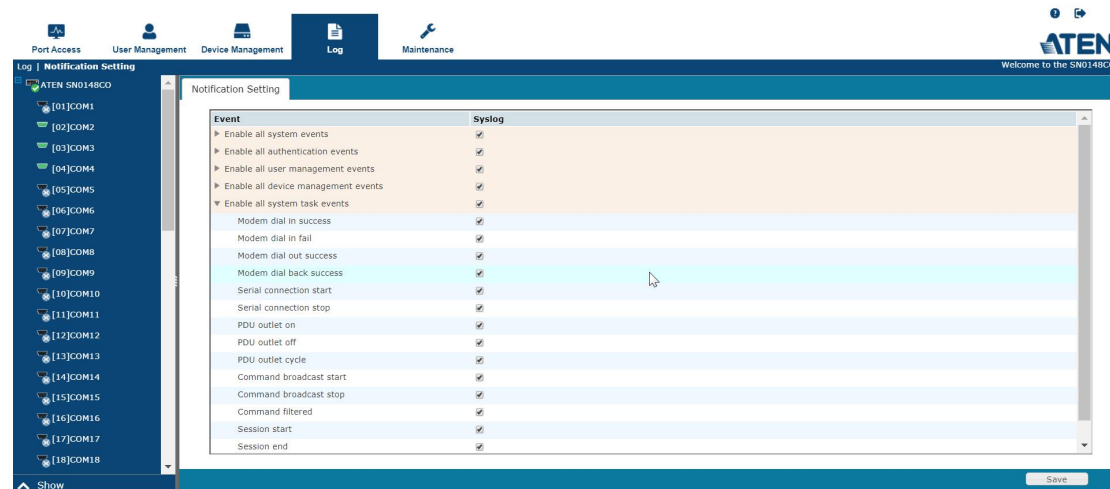


Event Log: There are several different types of event, please refer to “notification setting” for more detail



2. Port Log: command/character input from SN and reply from device is called Port log. Below are example of port log from SN to a network switch.

```

Username: administrator
Password:
ES0152P# show ru [7D      [7Dshow running-config
Building configuration...
hostname ES0152P
username admin privilege 15 password encrypted
2b95856a70323846dcda9f7062abb7ed11fca4a3cd6b4a30d74e8f636ab1768812fe2e666ffd3ac32896056
c770d47fc931fbafb0b610695595c2eaf53bf2012
username administrator privilege 15 password encrypted
88dc6a570979160aee0b1c541605dce2da803b2f650559492baa1ebec3b301a762ab1ba1aa074bc5848957
3a19e6b463688817f49d38c10b7d0cce1494e1d5e2]
system name ES0152P
system description 52-Port GbE L2+ Managed PoE Switch

```

For outputting Port log and event log to syslog, you need to have two syslog servers: one is for port log and the other for event log.

1. Port Log:

Under Device Management-->Device-->Syslog Setting for Port logs

The screenshot shows the ATEN device management interface for device SN0148C0. The 'Device Information' tab is active, displaying configuration options for NFS and External USB. The NFS Settings table is as follows:

NFS Name	NFS Source	Status	Auto	Operation
nfs1		N/A	<input type="checkbox"/>	Mount
nfs2		N/A	<input type="checkbox"/>	Mount
nfs3		N/A	<input type="checkbox"/>	Mount
nfs4		N/A	<input type="checkbox"/>	Mount

The External USB Settings table is as follows:

USB Name	USB Source	Status	Operation
usb1		N/A	Mount
usb2		N/A	Mount
usb3		N/A	Mount

Below these tables, the 'Syslog Settings for Port Logs' section is visible, with 'Enable Syslog' checked. The Server IP/Domain is set to 192.168.0.112, Syslog Category to Local5, Port to 514, and Protocol to UDP. There is also an option for 'Enable secure connection(SSL)' which is unchecked. At the bottom, there is a 'Port Name Auto Discovery' section with 'Enable auto discovery' unchecked. 'Reboot' and 'Save' buttons are at the bottom right.

2. Event Log

Under Device Management-->ANMS-->Syslog Server

The screenshot shows the ATEN device management interface for device SN0148C0, specifically the 'Event Destination' configuration page. The 'Syslog Server' section is expanded, showing the following settings:

- Enable
- Server IP: 192.168.0.222
- Service Port: 514

Other sections visible include SMTP Settings (with 'Enable report from the following SMTP Server' unchecked), Log Server Settings, SNMP Settings, SMS Settings, and External USB Drive. The 'Save' button is located at the bottom right of the configuration area.