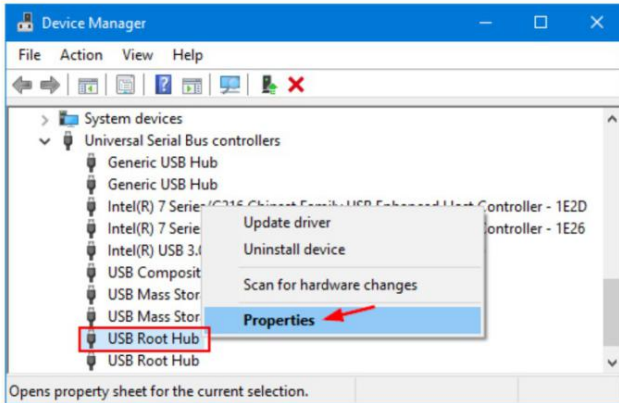
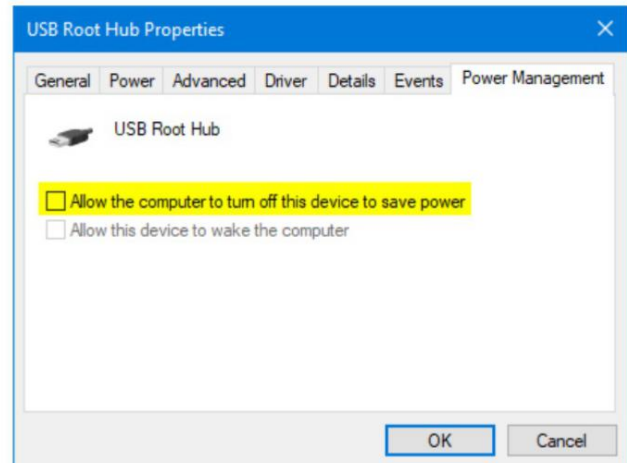


## Method 1: Enable / Disable Power Saving on USB Ports

Device Manager >> Universal Serial Bus >> USB Root Hub >> Properties

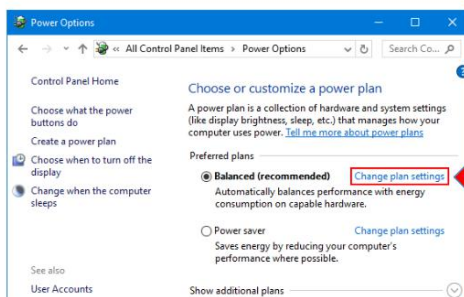


Uncheck "Allow the computer to turn off this device to save power"

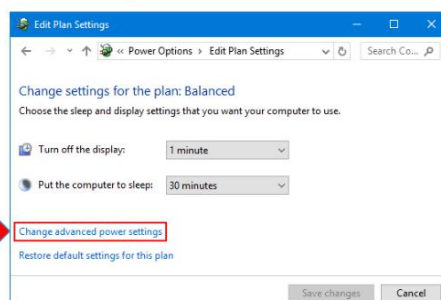


Repeat the steps for all of the USB Root Hubs on the computer.

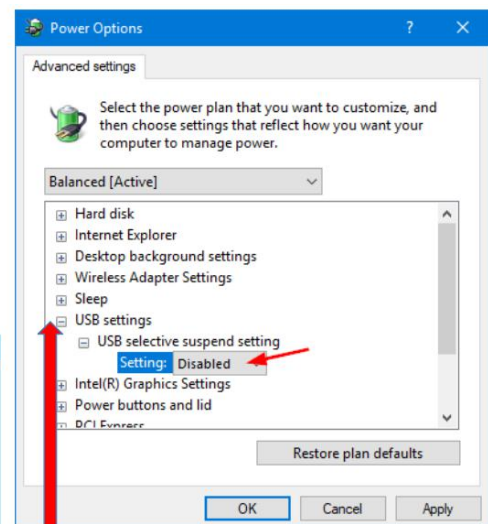
## Method 2: Enable / Disable USB Selective Suspend Setting



A. Change Windows Power Plan settings



B. Change advanced power settings



C. USB settings >> USB Selective suspend setting >> Disabled