

How to set TCP_Server/Client and let two devices on SN port communicate

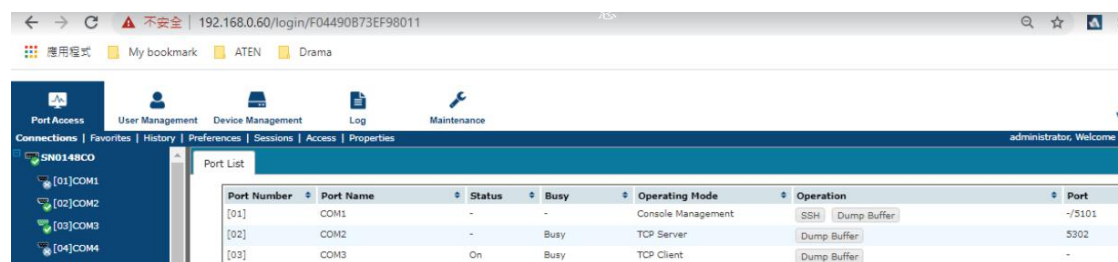
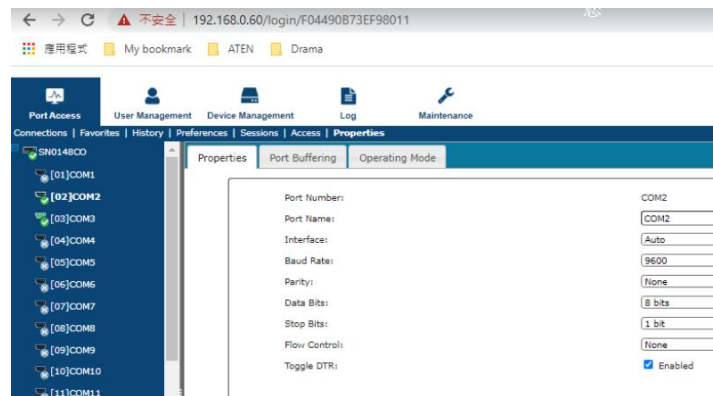
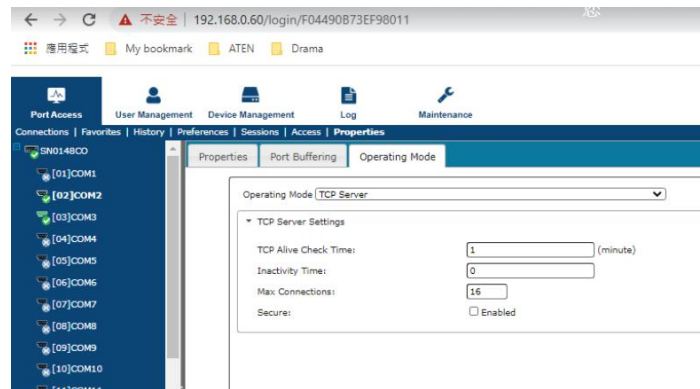
Port 2: Operating mode TCP_Server, Properties: baud rate 9600

Port 3: Operating mode TCP_Client, Properties: baud rate 9600

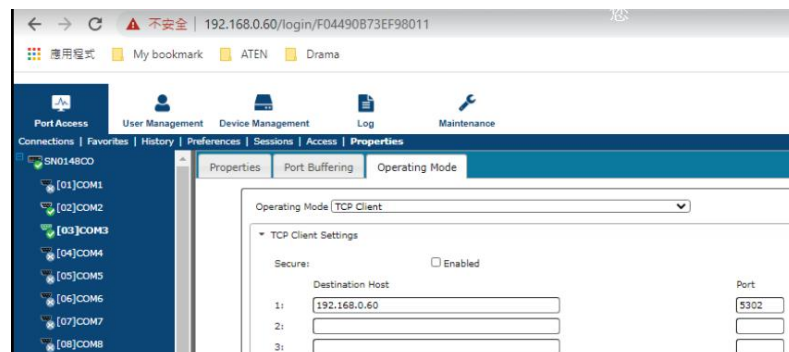
SN0148CO port 2: SA0142--Null modem cable--PC1 COM1

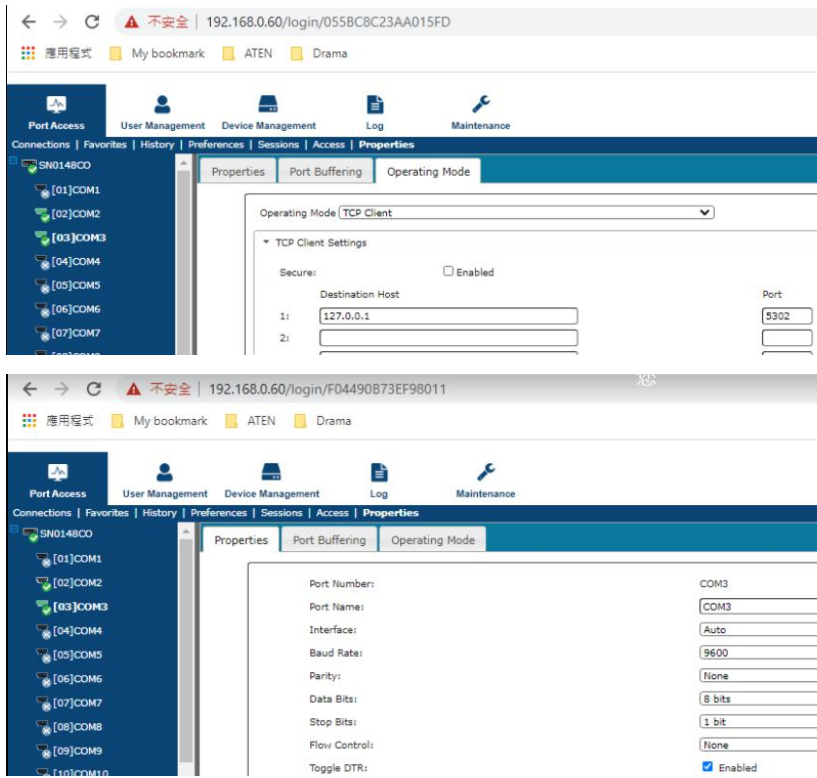
SN0148CO port 3: SA0142--Null modem cable--PC2 COM1

TCP_Server:



TCP_Client:





Result: Both PC open Putty on the COM port, and both can see typing characters.