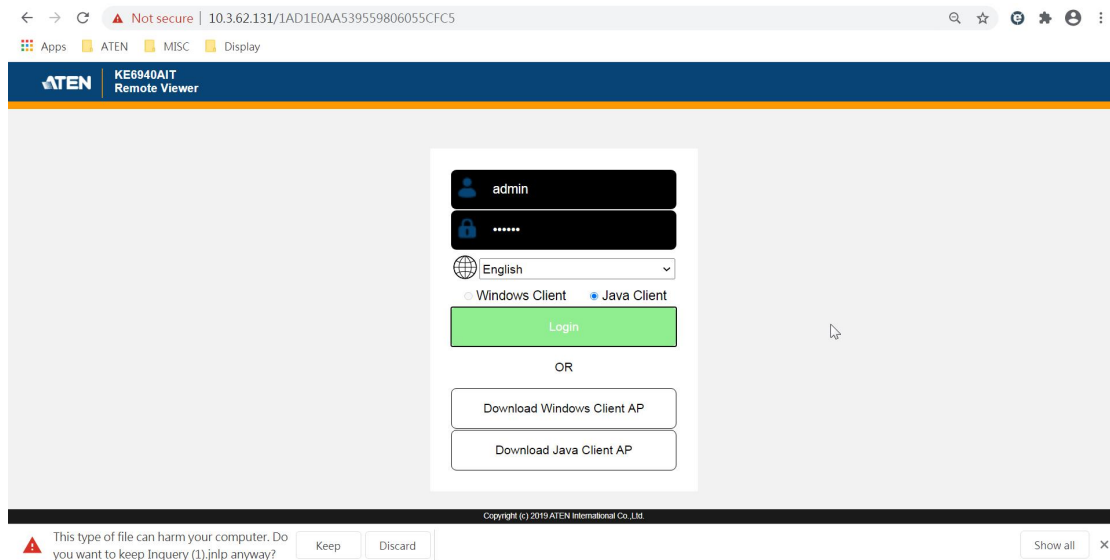


How to Install KE6940AIT

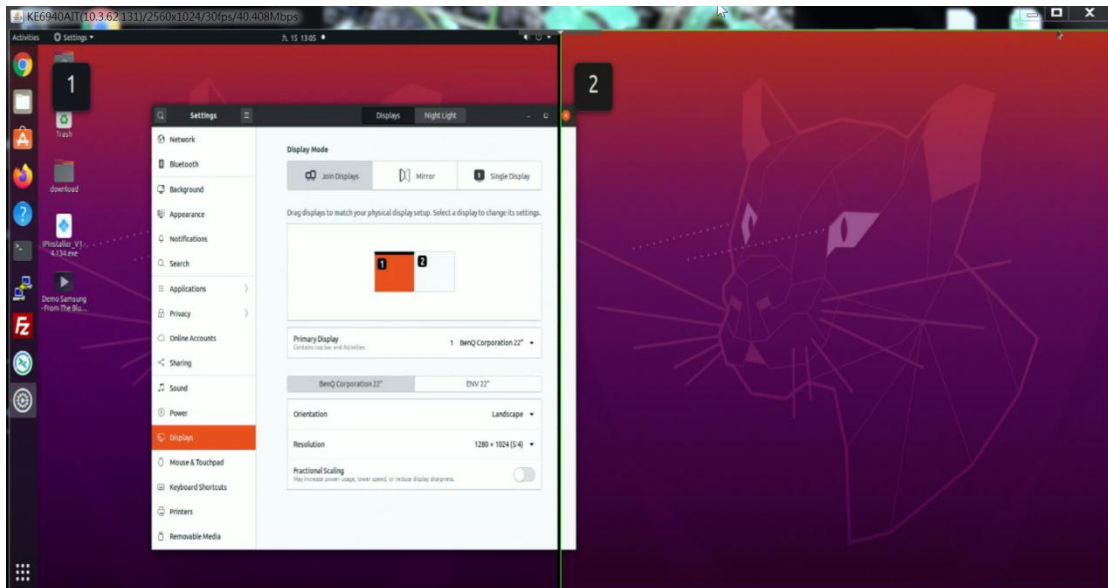
KE6940AIT with two RJ45 ports, one is for connecting CCKM Network in Matrix mode, or KE Rx in Extender mode(default is 192.168.0.61). The other port is for connecting a network for remote viewer(default is 192.168.0.62). In below example we use 10.3.62.131.



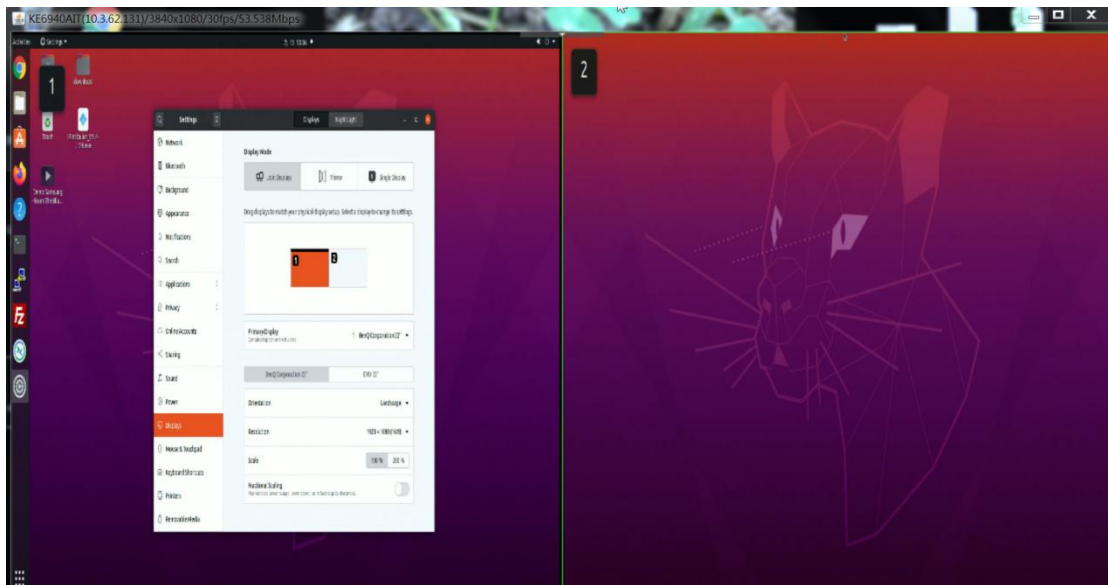
1. Matrix Mode: Please add KE6940AIT to CCKM first, and then you can use CCKM account and password to login KE6940AIT remote viewer.



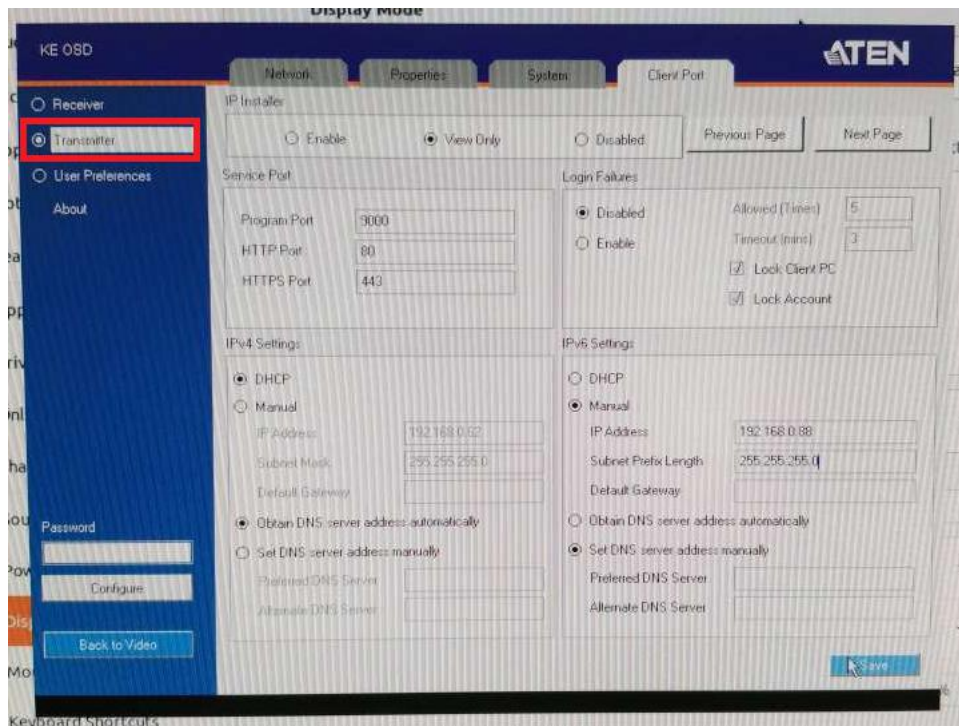
Then you can see the two ports from the remote viewer: below example is both screen configured as 1280x1024 resolution.



Below example is both screen configured as 1920x1080 resolution.



Extender mode: for example we connect KE6940AIT directly to a KE6940AR, and we can configure KE6940AIT from KE6940AR OSD by selecting transmitter.



And we only need to enter password to open remote viewer and control the connected server:

